

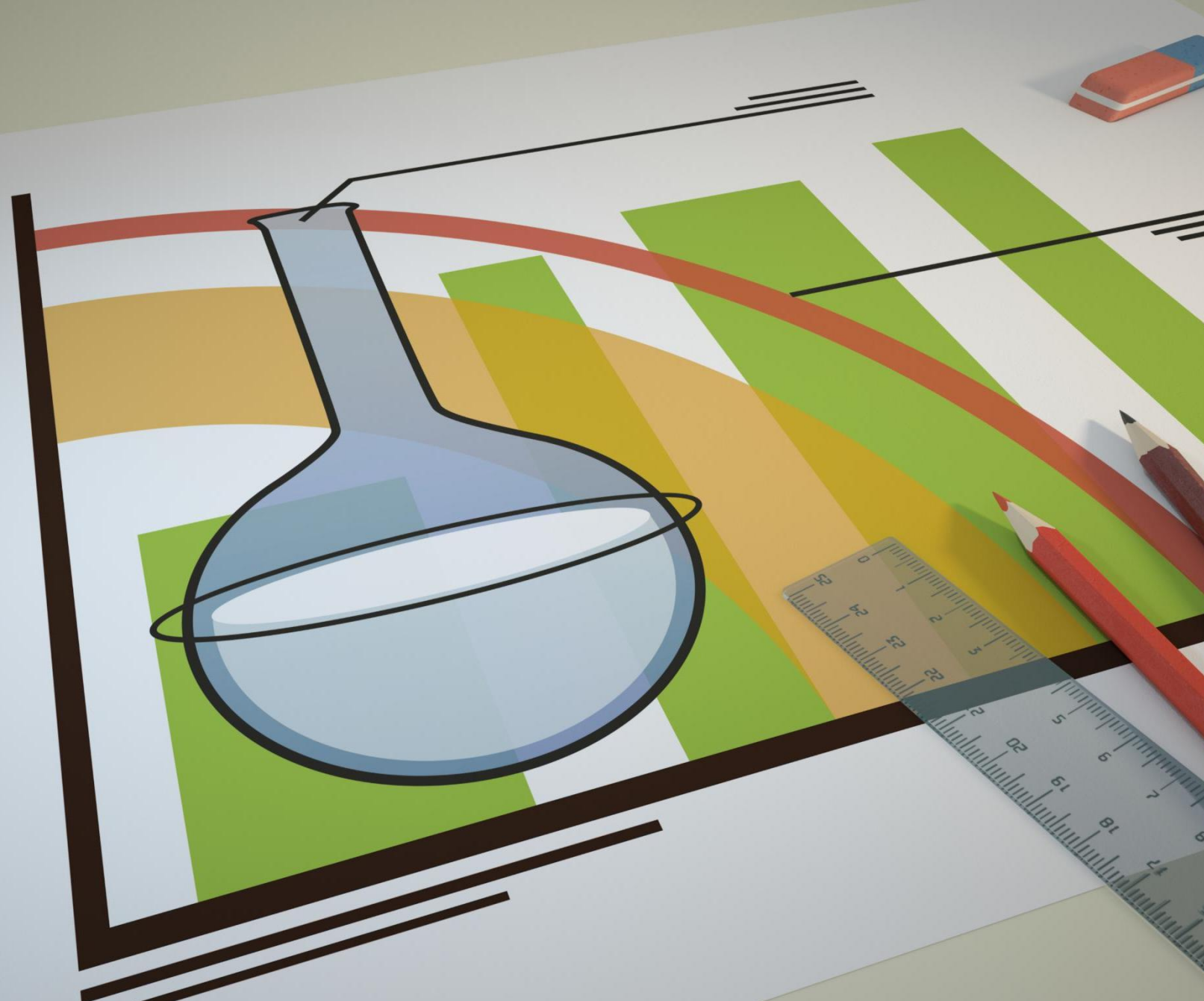
Creating effective and functional test presentations

# POWERPOINT FOR TESTING PURPOSES: STRUCTURE AND BEST PRACTICES

# AGENDA OVERVIEW

- Understanding the Purpose of a Test PowerPoint
- Essential Components of a Test PowerPoint
- Design and Layout Considerations
- Testing and Troubleshooting Your Presentation

# UNDERSTANDING THE PURPOSE OF A TEST POWERPOINT



# DEFINING TEST PRESENTATIONS AND THEIR USES

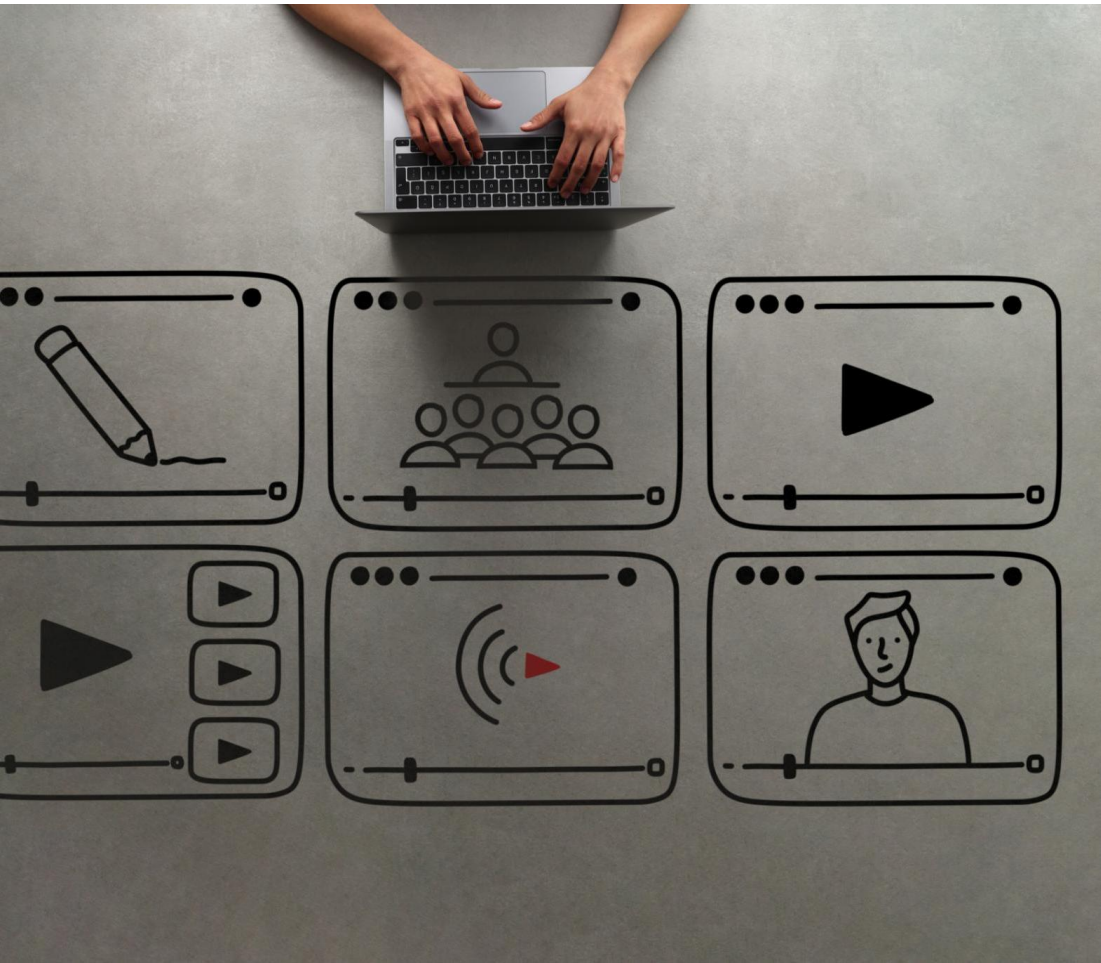
## **Purpose of Test Presentations**

Test presentations serve as drafts to validate slide layout, design, and multimedia content before final release.

## **Applications of Test Presentations**

They are commonly used in training sessions, software testing, and content review processes to ensure quality.

# COMMON SCENARIOS FOR TESTING POWERPOINT FEATURES



## Animations and Transitions

Testing animations and transitions ensures smooth visual effects during the presentation delivery.

## Embedded Media Playback

Check embedded video and audio playback to verify media functions correctly within slides.

## Device Compatibility

Verify presentations work consistently across different devices and software versions.

## Collaboration Workflows

Test collaborative editing and sharing features for smooth teamwork and version control.

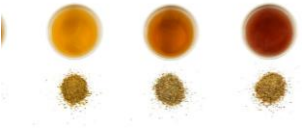
# ESSENTIAL COMPONENTS OF A TEST POWERPOINT

# SAMPLE SLIDES: TITLES, CONTENT, AND IMAGES



## **Text-Heavy Slides**

Slides with detailed paragraphs test the readability and aesthetic balance of dense content.



## **Bullet Point Slides**

Using bullet points helps break down information for clarity and improved audience engagement.



## **Image-Based Slides**

Visual slides with images test how pictures enhance message delivery and visual interest.





# INCORPORATING CHARTS, TABLES, AND DIAGRAMS

## Purpose of Visual Data

Charts, tables, and diagrams visually represent data to enhance understanding and clarify complex information.

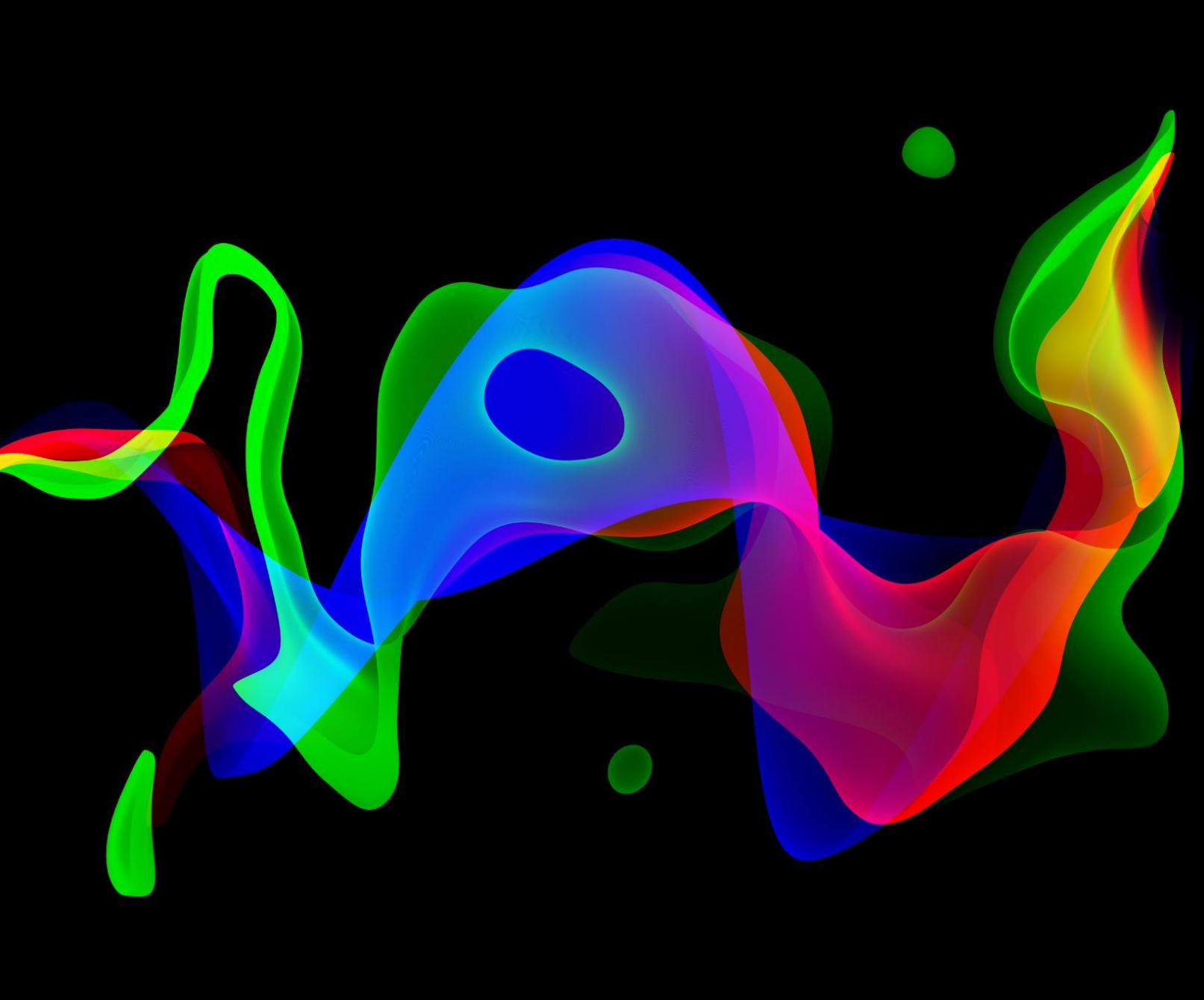
## Testing Display Accuracy

Visual elements in test slides help ensure proper display, resizing, and formatting across devices and screens.

## Improving Presentation Quality

Using diverse visual data formats improves the professionalism and clarity of presentation content.





# USE OF ANIMATIONS AND TRANSITIONS

## **Ensuring Smooth Playback**

Testing animations and transitions guarantees seamless playback without interruptions during presentations.


## **Device Compatibility**

Verifying animations work across multiple devices and software versions avoids technical issues during use.

## **Avoiding Presentation Disruptions**

Pre-testing helps prevent disruptions caused by incompatible animations or failed transitions in live presentations.

# DESIGN AND LAYOUT CONSIDERATIONS



# CHOOSING A SIMPLE, READABLE TEMPLATE

## **Clean Template Design**

Choosing a clean and simple template reduces distraction and enhances content focus during presentations.

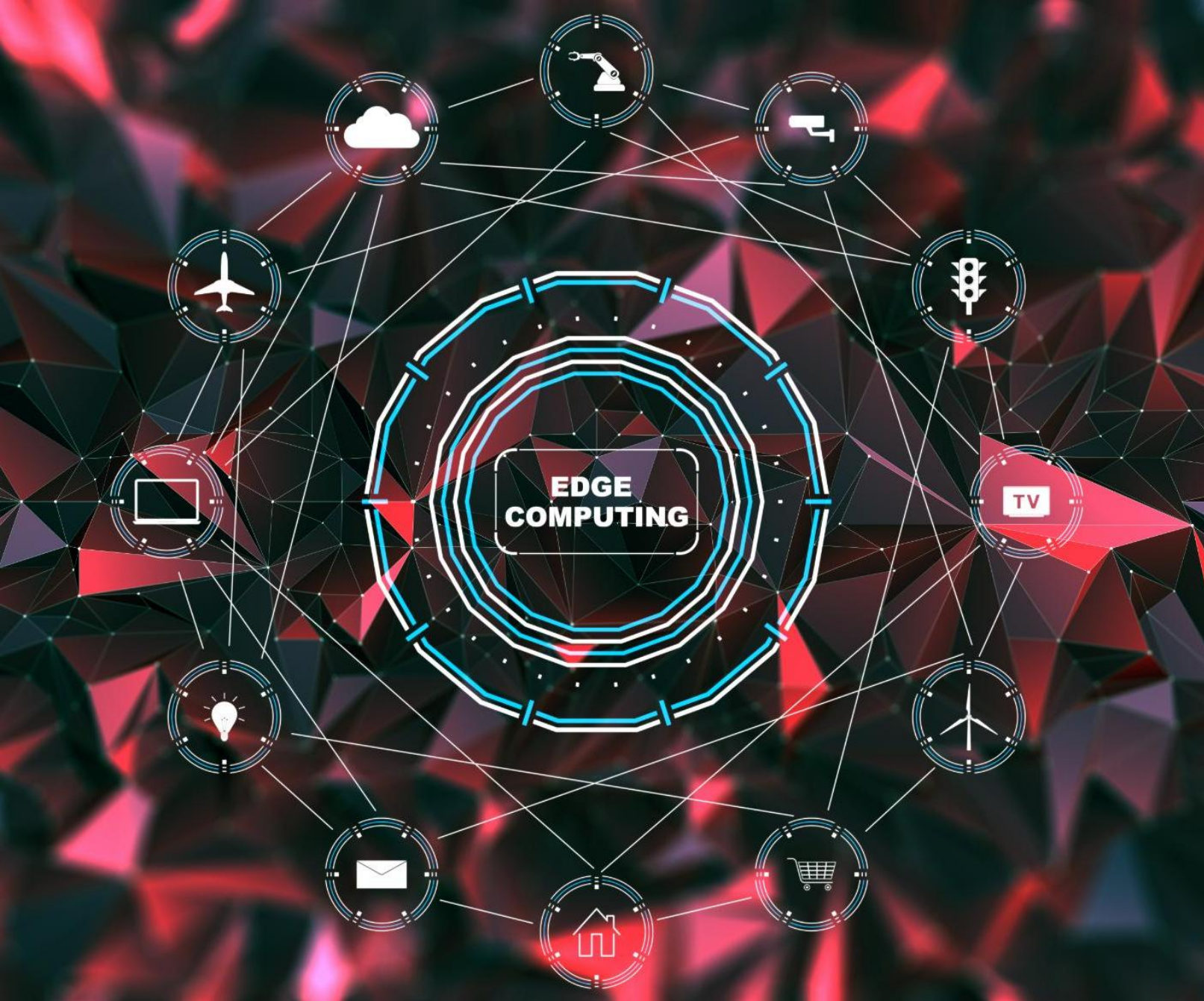
## **Legible Fonts**

Using clear, easy-to-read fonts improves audience comprehension and message delivery.

## **Strong Color Contrast**

High contrast between text and background ensures text is easily visible and accessible.





# BALANCING TEXT AND VISUAL ELEMENTS

## Importance of Balance

Ensuring a balance between text and visuals prevents clutter and enhances clarity in presentations.

## Audience Engagement

Balanced slides improve audience engagement by making content easier to understand and retain.



# ENSURING ACCESSIBILITY AND USABILITY

## **Alt Text Usage**

Alt text ensures images are accessible to screen readers, improving understanding for visually impaired users.

## **High Contrast Colors**

Using high-contrast colors enhances readability and visibility for users with visual impairments.

## **Keyboard Navigation**

Keyboard navigation allows users to interact with content without a mouse, improving usability and accessibility.



# TESTING AND TROUBLESHOOTING YOUR PRESENTATION



# PREVIEWING AND REHEARSING SLIDES

## Preview Animations and Transitions

Presentation mode allows previewing of animations, transitions, and multimedia elements seamlessly.

## Rehearse Timings and Flow

Rehearsing timings ensures smooth flow and helps meet presentation objectives effectively.

# IDENTIFYING AND FIXING COMMON ISSUES

## **Broken Links**

Broken links disrupt content flow and must be identified early to ensure smooth navigation.

## **Unsupported Media**

Unsupported media formats can prevent playback; verifying compatibility ensures proper media display.

## **Inconsistent Fonts**

Inconsistent fonts reduce professionalism; uniform font styles enhance presentation aesthetics.

## **Animation Glitches**

Animation glitches distract the audience and should be fixed for smooth transitions.



# CONCLUSION

## **Clear Purpose**

Establishing a clear purpose guides the presentation's content and audience engagement effectively.

## **Essential Components**

Incorporating key components ensures the presentation covers all necessary information comprehensively.

## **Thoughtful Design**

Good design enhances understanding and keeps the audience interested throughout the presentation.

## **Thorough Testing**

Testing presentations for reliability ensures smooth delivery and effective communication in all scenarios.